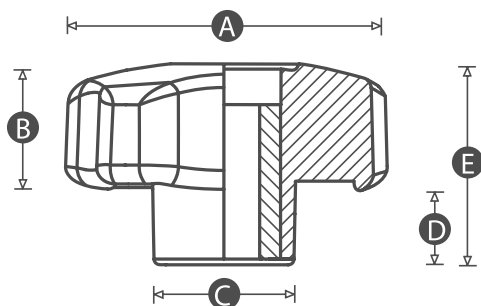


# Lobe Knobs

## Female



### MATERIAL

/ High impact resistant thermoplastic

### STANDARD COLOUR

/ Black

### FINISH

/ Matt

### FEMALE INSERT MATERIAL

/ Brass, zinc plated steel or stainless steel

### CAP COLOURS

/ Available with caps in many different colours (MOQs apply)



Part No.	A	B	C	D	E	Thread size	Thread length (mm)
VLKM528B	28	16	14	9	25	M5	Brass
VLKM628B	28	16	14	9	25	M6	Brass
VLKM628ZP	28	16	14	9	25	M6	Zinc plated steel
VLKM628SS	28	16	14	9	25	M6	Stainless steel
VLKM640B	40	17	18	12	29	M6	Brass
VLKM640ZP	40	17	18	12	29	M8	Zinc plated steel
VLKM840B	40	17	18	12	29	M8	Brass
VLKM840SS	40	17	18	12	29	M8	Stainless steel
VLKM650B	50	19	21	12	31	M6	Brass
VLKM850B	50	19	21	12	31	M8	Brass
VLKM850ZP	50	19	21	12	31	M8	Zinc plated steel
VLKM850SS	50	19	21	12	31	M8	Stainless steel
VLKM1050B	50	19	21	12	31	M10	Brass
VLKM1050ZP	50	19	21	12	31	M10	Zinc plated steel
VLKM1050SS	50	19	21	12	31	M10	Stainless steel
VLKM860B	60	21	21	13	34	M8	Brass
VLKM1060B	60	21	21	13	34	M10	Brass
VLKM1060ZP	60	21	21	13	34	M10	Zinc plated steel
VLKM1060SS	60	21	21	13	34	M10	Stainless steel
VLKM1260B	60	21	21	13	34	M12	Brass
VLKM1260ZP	60	21	21	13	34	M12	Zinc plated steel
VLKM1260SS	60	21	21	13	34	M12	Stainless steel