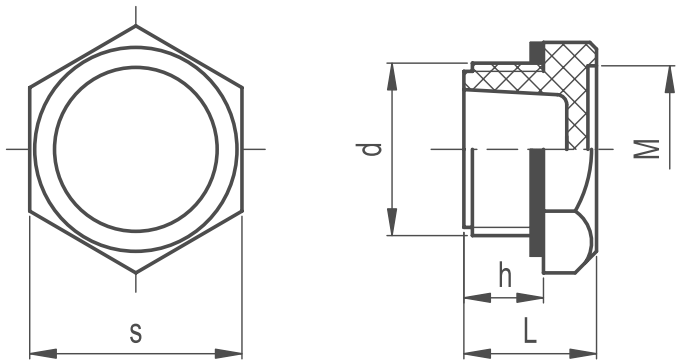


Threaded Plug



- / **Material**
Glass-fibre reinforced polyamide based (PA) technopolymer. Resistant to solvents, oils, greases and other chemical agents.
- / **Colour**
Black, matt finish.
- / **Flat packing ring**
NBR synthetic rubber.
- / **Maximum continuous working temperature**
130°C.

ACCESSORIES ON REQUEST
Plugs are suitable for mounting MH. aluminium plates with graphic symbols.

TECHNICAL DATA
An adequate tightening torque (see table below) is recommended when screwing the plug, so as to guarantee optimal tightness without any deformation of the packing ring. Suggested tightening torque is the result of laboratory tests carried out at ambient temperature (23°C) with plug, packing ring and reservoir walls perfectly cleaned.



Part Reference	D	h	s	L	M	Tightening Torque (Nm)
TP1	M10x1.5	9	19	16	15	4-5
TP2	M12x1.5	9	19	16	15	6-8
TP3	M14x1.5	9	19	16	15	6-8
TP4	M16x1.5	9	22	16	17	8-10
TP5	M18x1.5	11	26	18	20.5	8-10
TP6	M20x1.5	11	26	18	20.5	8-10
TP7	M22x1.5	12	32	20	25	10-12
TP8	M25x1.5	12	32	20	25	10-12
TP9	M26x1.5	12	32	20	25	10-12
TP10	M35x1.5	13	38	22	31	15-18
TP11	M40x1.5	14	46	24	38	15-18
TP12	G 1/8	9	19	16	15	4-6
TP13	G 1/4	9	19	16	15	4-6
TP14	G 3/8	9	22	16	17	8-10
TP15	G 1/2	11	26	18	20.5	8-10
TP16	G 3/4	12	32	20	25	10-12
TP17	G 1	13	38	22	31	12-15
TP18	G1 1/4	14	46	24	38	15-18
TP19	G1 1/2	15	55	26	46	15-18