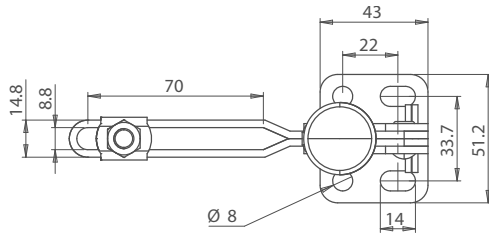


Vertical Toggle Clamp Flat Base Slotted Arm



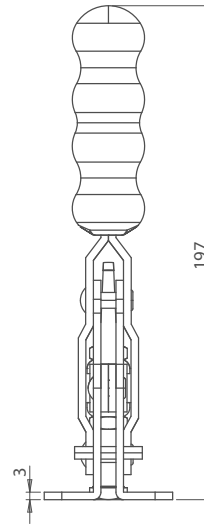
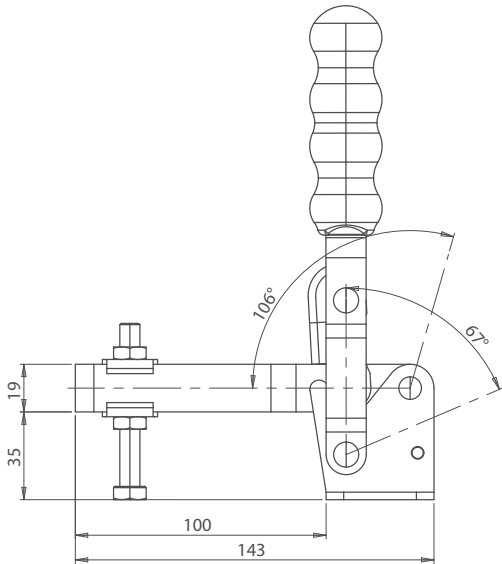
185

CLAMPING & FIXING



**HUGE
STOCKS**

**VOLUME
DISCOUNT**



KEY INFORMATION

- / **Part No.**
TC13002B
- / **Holding Force**
250Kg
- / **Arm Opens**
106°
- / **Handle Opens**
67°
- / **Weight**
0.38Kg
- / **Spindle Supplied**
TC086512
- / **Flanged Washers Supplied**
FW-516

