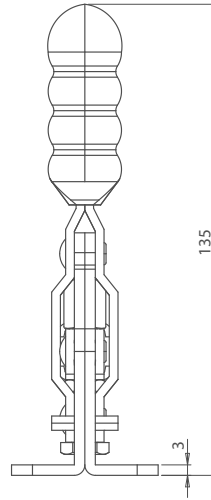
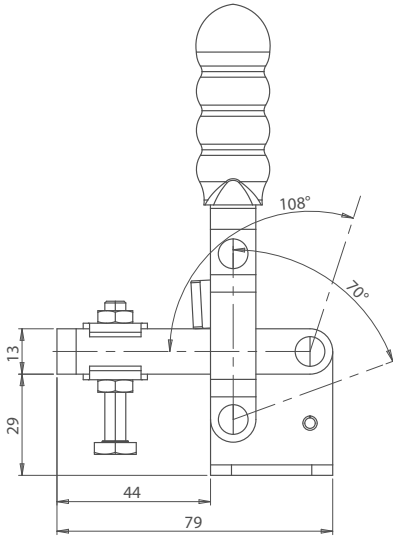
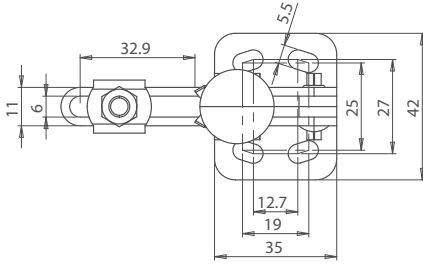


Vertical Toggle Clamp Flat Base Slotted Arm



183

CLAMPING & FIXING

KEY INFORMATION

- / Part No.
TC12002B
- / Holding Force
150Kg
- / Arm Opens
108°
- / Handle Opens
70°
- / Weight
0.17Kg
- / Spindle Supplied
TC064010+TC06 Cap
- / Flanged Washers Supplied
FW-140

