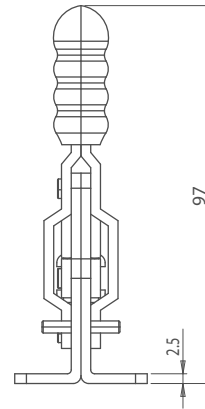
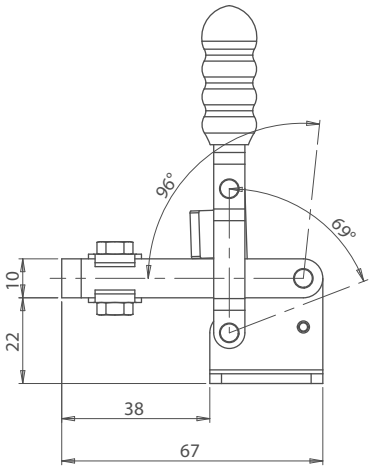
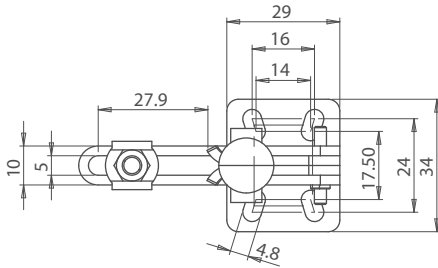


# Vertical Toggle Clamp Flat Base Slotted Arm



181

CLAMPING & FIXING



## KEY INFORMATION

- / **Part No.**  
TC11002B
- / **Holding Force**  
75Kg
- / **Arm Opens**  
96°
- / **Handle Opens**  
66°
- / **Weight**  
0.08Kg
- / **Spindle Supplied**  
TC054008+

