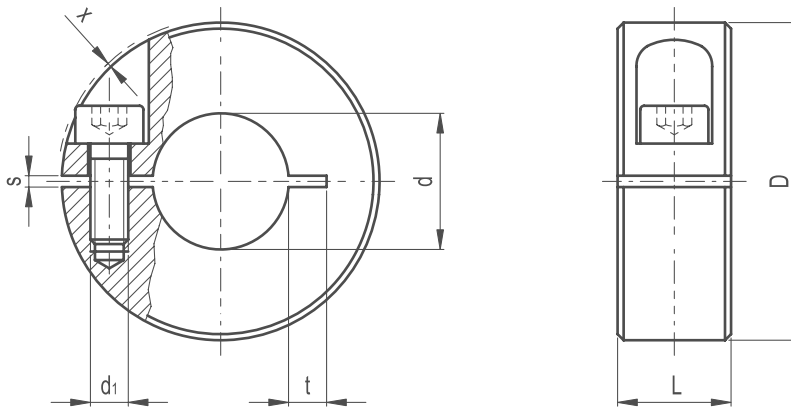


Semi-Split Clamping Collar

323

POSITIONING & MACHINE ELEMENTS



/ Material

Black-oxide steel.

/ Clamping assembly system

Black-oxide steel grub screw, cylindrical head with hexagon socket, supplied assembled.

For diameters D = from 20 to 36 threaded through hole; D > 42 threaded blind hole.

FEATURES AND APPLICATIONS

Split set collars can be used not only as end stops, but they can also be used for fixing other components, such as end limit switches. Semi-split set collars can be assembled without damaging the surfaces of the shaft when high clamping forces are necessary.

TECHNICAL DATA

Shaft tolerance = h11.



Part Reference	D	dH8	L	d1	s	x
SSCC1	20	6	9	M3	1.2	0.3
SSCC2	22	8	9	M3	1.2	0.2
SSCC3	26	10	11	M4	1.5	1
SSCC4	30	12	11	M4	1.5	0.2
SSCC5	32	14	11	M4	1.5	0.2
SSCC6	36	15	13	M5	1.5	1
SSCC7	36	16	13	M5	1.5	1
SSCC8	42	18	15	M5	1.5	0.2
SSCC9	42	20	15	M5	1.5	0.2
SSCC10	48	22	15	M5	1.5	0
SSCC11	48	25	15	M5	1.5	0
SSCC12	55	28	15	M6	1.5	0
SSCC13	55	30	15	M6	1.5	0
SSCC14	60	32	15	M6	2	0
SSCC15	60	35	15	M6	2	0
SSCC16	65	40	15	M6	2	0.2