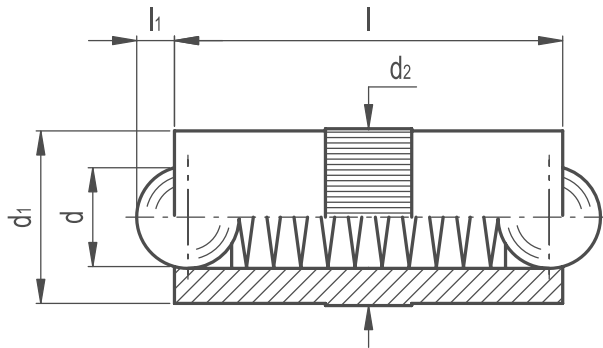


Spring Plunger Double Ended Ball Type



- / **Body**
Brass with central horizontal knurling.
- / **Balls and spring**
Hardened stainless steel balls, stainless steel spring.

FEATURES AND APPLICATIONS
Double ended smooth balls spring plungers represent a further development of plungers type SBSB.



Part Reference	d1	2	d2+0.05	l	l1	Initial	Max
SPBDE1	2.5	2	2.52	5.3	0.65	1.3	2.5
SPBDE2	3	2.5	3.02	7.3	0.8	2	4.5
SPBDE3	4	3	4.03	9	0.9	2.5	7.5
SPBDE4	5	4	5.03	10.8	1.2	3.5	8
SPBDE5	7	6	7.03	14	2	4	12
SPBDE6	8	6.5	8.03	18	2.1	6	15