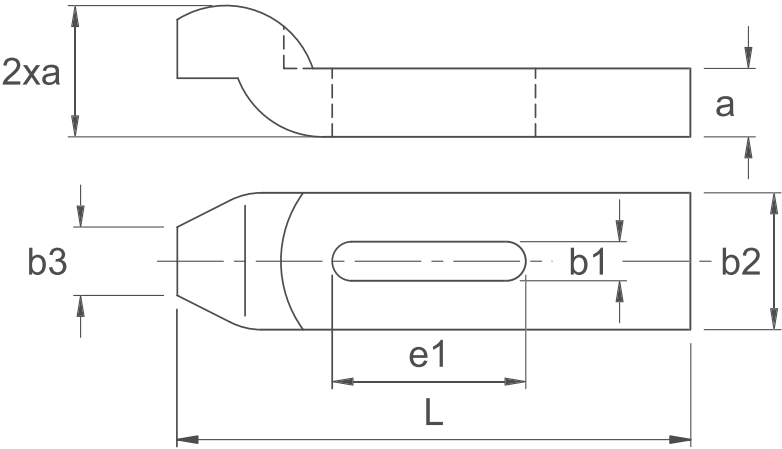


# Swan-Neck Clamp

DIN 6316



**MATERIAL**

/ Heat treated steel, enamelled.



Part Reference	b1	L	M	a	b2	b3	e1
SNC1	7	60	M6	20	20	10	10
SNC2	9	80	M8	25	25	12	12
SNC3	11	100	M10	30	32	15	15
SNC5	18	125	M16+M18	50	50	25	25
SNC6	18	160	M16+M18	50	50	25	25
SNC7	22	160	M20	60	70	30	30
SNC8	22	200	M20	60	70	30	30
SNC9	26	200	M24	70	80	35	35
SNC10	26	250	M24	70	80	35	35
SNC11	34	315	M30	80	100	40	50