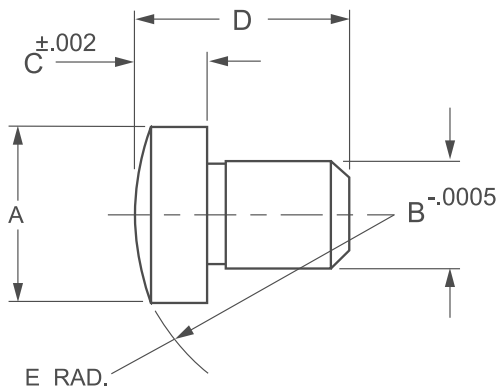


Location Pins

SLB Type Spherical Locator



**VOLUME
DISCOUNT**

KEY FEATURES

- / Case hardened
- / Black oxide finish
- / Pin tolerance $-.0005$
- / Head thickness $\pm .002$

APPLICATION

Boneham's Spherical Locator Buttons are designed for irregular work surface applications, the spherical radius creates a single point of contact on contoured workpieces. The features of the SLB allow for other uses such as jig feet and rest pads. The pin element of the button is ground to allow for press fit.

ORDERING INSTRUCTIONS

When ordering identify the pin diameter and head depth required and select the appropriate part number. Example: SLB5000

NOTES

- / Stainless and specials can be manufactured upon request. Please talk to the technical sales team.
- / Metric sizes upon request.



Part No.	Dimensions				
	A	B + .0000 - .0005	C + / - .002	D	E
SLB3750	5/16	0.1890	1/8	3/8	1/2
SLB5000	3/8	0.2515	3/16	1/2	5/8
SLB5625	1/2	0.3765	3/16	9/16	3/4
SLB6250	1/2	0.3765	1/4	5/8	3/4
SLB7500	1/2	0.3765	3/8	3/4	3/4
SLB8750	1/2	0.3765	1/2	7/8	3/4