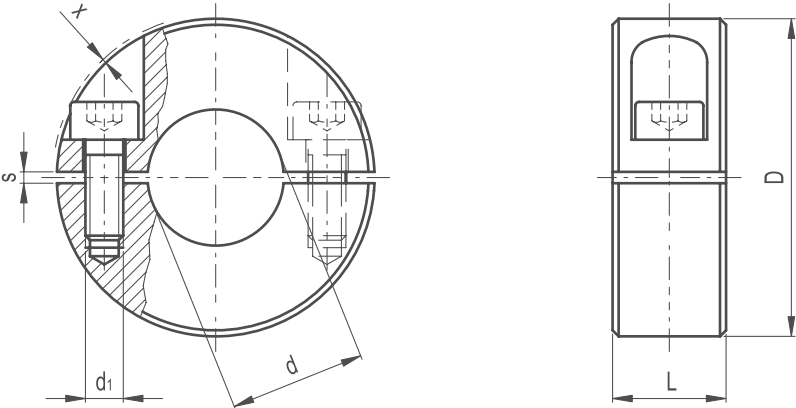


Split Clamping Collar



- / **Material**
Black-oxide steel.
- / **Clamping assembly system**
AISI 303 stainless steel grub screws, cylindrical head with hexagon socket, supplied assembled.
For diameters D = from 20 to 36 threaded through holes; D > 42 threaded blind holes.

FEATURES AND APPLICATIONS
Split set collars can be used not only as end stops, but they can also be used for fixing other components, such as end limit switches. Split set collars can also be assembled on shafts whose shape may not allow their sliding.



Part Reference	D	dH8	L	d1	s	x
SCC1	20	6	9	M3	1.2	0.3
SCC2	22	8	9	M3	1.2	0.2
SCC3	26	10	11	M4	1.5	1
SCC4	30	12	11	M4	1.5	0.2
SCC5	32	14	11	M4	1.5	0.2
SCC6	36	15	13	M5	1.5	1
SCC7	36	16	13	M5	1.5	1
SCC8	42	18	15	M5	1.5	0.2
SCC9	42	20	15	M5	1.5	0.2
SCC10	48	22	15	M5	1.5	0
SCC11	48	25	15	M5	1.5	0
SCC12	55	28	15	M6	1.5	0
SCC13	55	30	15	M6	1.5	0
SCC14	60	32	15	M6	2	0
SCC15	60	35	15	M6	2	0
SCC16	65	40	15	M6	2	0.2