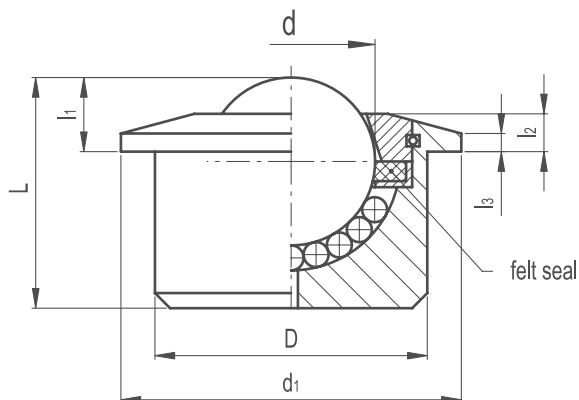


# Pot Roller Unit (Ball Transfer)

317

POSITIONING &amp; MACHINE ELEMENTS



## / Material

Turned and zinc-plated steel.

## / Retaining components

Zinc-plated steel.

## / Balls

Zinc-plated steel - ZP

Stainless steel - SS

## / Retaining ring

Felt seat (only for dimensions 22 and 30)

## SPECIAL EXECUTIONS ON REQUEST

(For sufficient quantities)

/ Stainless steel body and balls.

## APPLICATIONS

Ball transfer units are particularly suitable on conveyor tracks. They make linear or rotary movements easier even with heavy loads.



Part Reference	d	L +0.3	D +0.8	d1	l1 +0.3	l2 +0.3	l3	Max. Load Carrying Capacity (N)
PRU1ZP	12.7	17	22	27	8	4	3.2	200
PRU2SS	12.7	17	22	27	8	4	3.2	150
PRU3ZP	15.8	21	24	31	9.5	5.5	4	500
PRU4SS	15.8	21	24	31	9.5	5.5	4	400
PRU5ZP	22.2	30.5	36	45	9.5	5	2.4	1300
PRU6SS	22.2	30.5	36	45	9.5	5	2.4	1000
PRU7ZP	30.1	37	45	55	13.5	7	4.5	2500
PRU8SS	30.1	37	45	55	13.5	7	4.5	2500