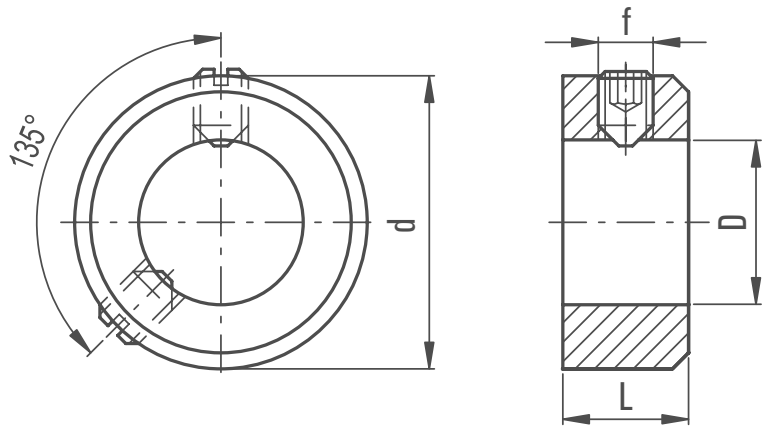


Positioning Rings Screw Assembly

With slotted head



MATERIAL

/ Black-oxide steel.

CLAMPING ASSEMBLY SYSTEM

/ Execution E: grub screw with hexagon socket.
Rings with d = 75 and 80 mm are provided with two grub screws.



Part Reference	D	d1	d	f
PR1-E	5	6	10	M3x4
PR2-E	6	8	12	M4x5
PR3-E	7	8	12	M4x5
PR4-E	8	8	16	M4x6
PR5-E	9	10	18	M5x8
PR6-E	10	10	20	M5x8
PR7-E	11	10	20	M5x8
PR8-E	12	12	22	M6x8
PR9-E	13	12	22	M6x8
PR10-E	14	12	25	M6x8
PR11-E	15	12	25	M6x8
PR12-E	16	12	28	M6x8
PR13-E	18	14	32	M6x8
PR14-E	20	14	32	M6x8
PR15-E	22	14	36	M6x10
PR16-E	24	16	40	M8x10
PR17-E	25	16	40	M8x10
PR18-E	26	16	40	M8x10
PR19-E	28	16	45	M8x12
PR20-E	30	16	45	M8x10
PR21-E	32	16	50	M8x12

Part Reference	D	d1	d	f
PR22-E	34	16	50	M8x12
PR23-E	35	16	56	M8x12
PR24-E	36	16	56	M8x12
PR25-E	38	16	56	M8x12
PR26-E	40	18	63	M10x16
PR27-E	42	18	63	M10x16
PR28-E	45	18	70	M10x16
PR29-E	48	18	70	M10x16
PR30-E	50	18	80	M10x16
PR31-E	52	18	80	M10x16
PR32-E	55	18	80	M10x16
PR33-E	56	18	80	M10x16
PR34-E	58	20	90	M10x16
PR35-E	60	20	90	M10x16
PR36-E	63	20	90	M10x16
PR37-E	65	20	100	M10x20
PR38-E	68	20	100	M10x20
PR39-E	70	20	100	M10x20
PR40-E	72	22	110	M12x20
PR41-E	75	22	110	M12x20
PR42-E	80	22	110	M12x20