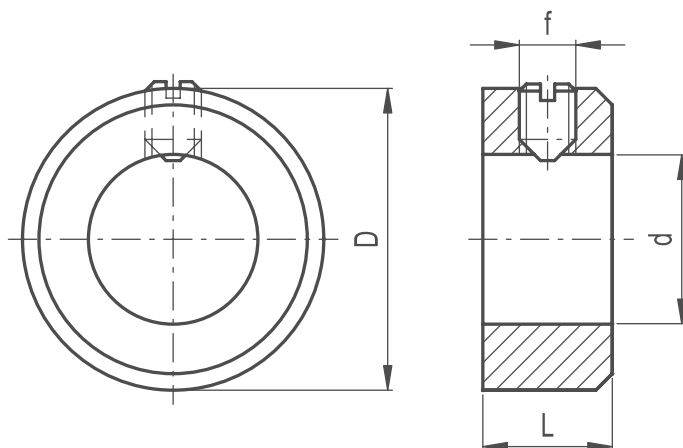


# Positioning Rings Screw Assembly Stainless Steel



327

POSITIONING & MACHINE ELEMENTS

## MATERIAL

/ Black-oxide steel.

## CLAMPING ASSEMBLY SYSTEM

/ Execution A: grub screw with screwdriver slotted head.

/ Execution E: grub screw with hexagon socket.

Rings with d = 75 and 80 mm are provided with two grub screws.



Part Reference	d H8	L js14	D	f
PR1-ASS	5	6	10	M3x4
PR2-ASS	6	8	12	M4x5
PR3-ASS	8	8	16	M4x6
PR4-ASS	9	10	18	M5x8
PR5-ASS	10	10	20	M5x8
PR6-ASS	11	10	20	M5x8
PR7-ASS	12	12	22	M6x8
PR8-ASS	13	12	22	M6x8
PR9-ASS	14	12	25	M6x8
PR10-ASS	15	12	25	M6x8
PR11-ASS	16	12	28	M6x8
PR12-ASS	18	14	32	M6x8
PR13-ASS	20	14	32	M6x8
PR14-ASS	22	14	36	M6x10
PR15-ASS	24	16	40	M8x10
PR16-ASS	25	16	40	M8x10
PR17-ASS	26	16	40	M8x10
PR18-ASS	28	16	45	M8x12
PR19-ASS	30	16	45	M8x10
PR20-ASS	32	16	50	M8x12
PR21-ASS	34	16	50	M8x12
PR22-ASS	35	16	56	M8x12
PR23-ASS	36	16	56	M8x12
PR24-ASS	38	16	56	M8x12
PR25-ASS	40	18	63	M10x16
PR26-ASS	45	18	70	M10x16
PR27-ASS	50	18	80	M10x16