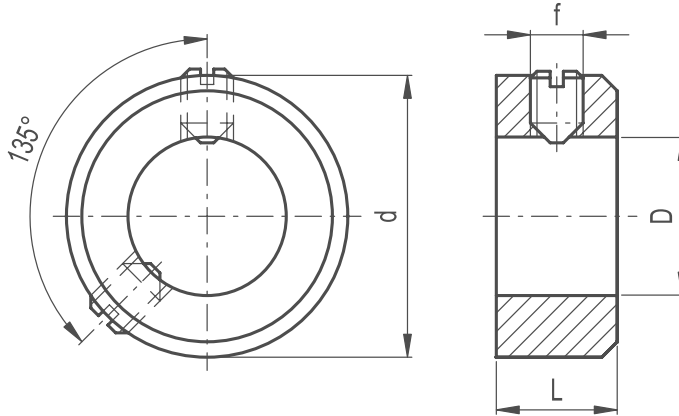


Positioning Rings Screw Assembly

With screwdriver slotted head



MATERIAL

/ Black-oxide steel.

CLAMPING ASSEMBLY SYSTEM

/ Execution A: grub screw with screwdriver slotted head.

Rings with $d = 75$ and 80 mm are provided with two grub screws.



Part Reference	D	d1	d	f
PR1-A	5	6	10	M3x4
PR2-A	6	8	12	M4x5
PR3-A	7	8	12	M4x5
PR4-A	8	8	16	M4x6
PR5-A	9	10	18	M5x8
PR6-A	10	10	20	M5x8
PR7-A	11	10	20	M5x8
PR8-A	12	12	22	M6x8
PR9-A	13	12	22	M6x8
PR10-A	14	12	25	M6x8
PR11-A	15	12	25	M6x8
PR12-A	16	12	28	M6x8
PR13-A	18	14	32	M6x8
PR14-A	20	14	32	M6x8
PR15-A	22	14	36	M6x10
PR16-A	24	16	40	M8x10
PR17-A	25	16	40	M8x10
PR18-A	26	16	40	M8x10
PR19-A	28	16	45	M8x12
PR20-A	30	16	45	M8x10
PR21-A	32	16	50	M8x12

Part Reference	D	d1	d	f
PR22-A	34	16	50	M8x12
PR23-A	35	16	56	M8x12
PR24-A	36	16	56	M8x12
PR25-A	38	16	56	M8x12
PR26-A	40	18	63	M10x16
PR27-A	42	18	63	M10x16
PR28-A	45	18	70	M10x16
PR29-A	48	18	70	M10x16
PR30-A	50	18	80	M10x16
PR31-A	52	18	80	M10x16
PR32-A	55	18	80	M10x16
PR33-A	56	18	80	M10x16
PR34-A	58	20	90	M10x16
PR35-A	60	20	90	M10x16
PR36-A	63	20	90	M10x16
PR37-A	65	20	100	M10x20
PR38-A	68	20	100	M10x20
PR39-A	70	20	100	M10x20
PR40-A	72	22	110	M12x20
PR41-A	75	22	110	M12x20
PR42-A	80	22	110	M12x20