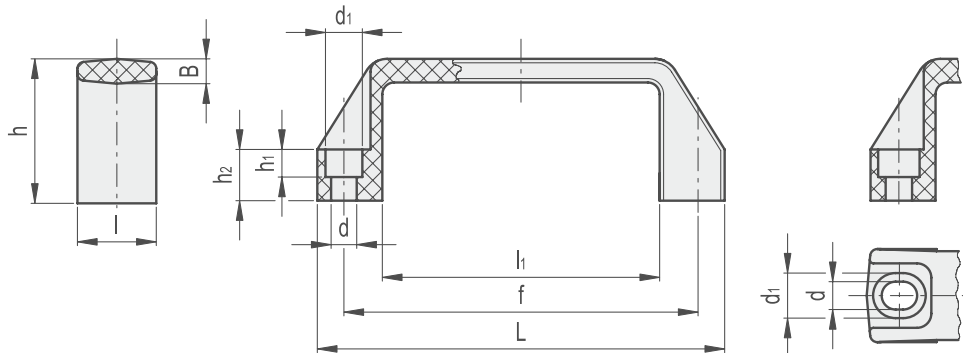


Pull Handles



MATERIAL
/ Glass-fibre reinforced polyamide based (PA) technopolymer
/ Resistant to solvents, oils, greases and other chemical agents

COLOUR
/ Black, orange, grey, red, matte finish

STANDARD EXECUTION
/ Pass-through holes for cylindrical-head screws with hexagon socket
/ Slotted assembly holes for fitting hole centres from 149 to 152 mm

TECHNICAL DATA
Tensile stress and impact strength: F1, F2, L1 and L2 values reported in the table are the result of breaking tests carried out with the appropriate dynamometric equipment under the test conditions shown in the figure with ambient temperature.



RAL 9005

RAL 2004

RAL 7031

RAL 3000

C9

C2

C31

C6

Part Ref.				Desc.	Main dimensions							Mounting holes				F1	F2	L1	L2	Weight
C9	C2	C31	C6		L	f	h	B	l	l1		d	d1	h1	h2	[N]	[N]	[J]	[J]	g
PH37001	PH37002	PH37004	-	74 x 109	109	93.5±0.5	38	6	21	74		6.5	10.5	7	13	3500	2500	15	8	26
PH37111	-	-	-	93 x 137	137	117±1	41	7	26	93		6.5	10.5	6	15	4500	2500	20	13	44
PH37101	PH37102	PH37104	PH37105	93 x 137	137	117±1	41	7	26	93		8.5	13.5	8.5	15	4500	2500	20	13	42
PH37145	-	-	-	100 x 142	142	120÷122±1	41	7	26	100		8.5	13.5	8.5	15	3700	2500	25	14	44
PH37151	PH37152	PH37154	-	108 x 150	150	132±1	45	7	27	108		8.5	13.5	8.5	16	3500	2500	27	14	47
PH37183	PH37184	PH37185	-	113 x 160	160	140±1	46	7	27	113		8.5	13.5	8.5	16	3400	2600	27	20	50
PH37191	PH37192	PH37193	-	125 x 172	172	149÷152±1	47	7	27	125		8.5	13.5	8.5	17	3000	2700	27	20	53
PH37241	PH37242	PH37244	-	132 x 179	179	160±1	50	7.5	28	132		8.5	13.5	8.5	17	3300	2700	29	20	60
PH37201	PH37202	PH37204	PH37205	151 x 196	196	179±1	50	7.5	28	151		8.5	13.5	8.5	17	2800	2700	33	20	70
PH37251	PH37252	PH37254	-	201 x 260	260	235±1	54	8.5	30	201		10.5	16.5	10.5	20	3200	3500	40	34	118