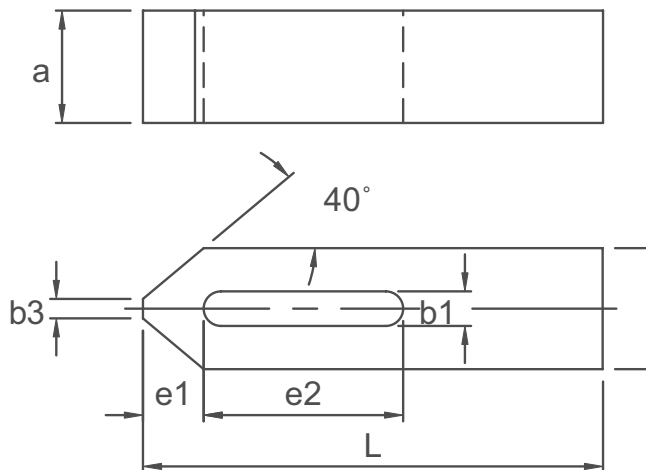


# Plain Clamp

DIN 6314



## MATERIAL

/ Carbon Steel, Enamelled finish.

/ Parallel flat surfaces to be used with other clamps or by itself.



Part Reference	b1	L	Screw Size	a	b2	b3	e1	e2
PC1-0003	7	50	M6	10	20	8	10	20
PC2-0011	9	60	M8	12	25	10	13	22
PC3-0029	11	80	M10	15	30	12	15	30
PC4-0037	14	100	M12/14	20	40	14	21	40
PC5-0045	14	125	M12/14	20	40	14	21	50
PC6-0052	18	125	M16/18	25	50	18	26	45
PC7-0060	18	160	M16/18	25	50	18	26	65
PC8-0078	22	160	M20/22	30	60	22	30	60
PC9-0086	22	200	M20/22	30	60	22	30	80
PC10-0094	26	200	M24	30	70	26	35	80
PC11-0102	26	250	M24	35	70	26	35	105
PC12-0110	34	250	M30	40	80	34	45	100
PC13-0128	34	315	M30	50	80	34	45	130