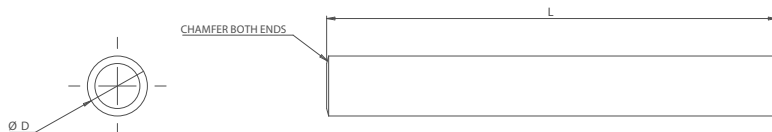


Nylon Dowel Pins

Nylon 66 Dowel Pins



HUGE STOCKS

NYLON

KEY FEATURES

- / White Nylon 6.6
- / Tough and Rigid
- / Excellent Abrasion and Chemical Resistance
- / Low Friction Coefficient

APPLICATION

Nylon dowels are ideal for the composite mould process. They have a wide temperature range (-40°C - +70°C) with good chemical and abrasive qualities. Boneham Nylon dowels work in vacuum environments and unlike traditional metal dowels, can easily be destroyed to prevent damage to the mould or workpiece.

ORDERING INSTRUCTIONS

When ordering identify the diameter and length required and choose the appropriate part number.

NOTES

- / Can be used with Boneham GS bushings or -BP mould bushings
- / Specials, including tighter tolerances Manufactured by BONEHAM.

DIAMETER TOLERANCES

2 - 5.5mm +/- 0.01
6 - 10mm 0.00 - + 0.02



METRIC

Part Code	D	L (0.00 - + 0.1)
N6DP0NU2C	3	20
N6DP0PU24B	2.4	30
N6DP0PU25B	2.5	30
N6DP0PU2C	3	30
N6DP0PW2C	3	35
N6DP0QU2C	3	40
N6DP0QW2C	3	45
N6DP0RU2C	3	50
N6DP0RW2C	3	55
N6DP0SU2C	3	60
N6DP0PU22C	3.2	30
N6DP0PU23C	3.3	30
N6DP0PU26C	3.6	30
N6DP0PU27C	3.7	30
N6DP0PU2D	4	30
N6DP5QU2D	4	35
N6DP0QU2D	4	40
N6DP5RU2D	4	45
N6DP0RU2D	4	50
N6DP5SU2D	4	55
N6DP0SU2D	4	60
N6DP0PU22D	4.2	30
N6DP0PU25D	4.5	30

Part Code	D	L (0.00 - + 0.1)
N6DP0PU2E	5	30
N6DP5QU2E	5	35
N6DP0QU2E	5	40
N6DP0RU2E	5	50
N6DP0PU25E	5.5	30
N6DP0QE2E	5.5	40
N6DP0PU2F	6	30
N6DP5QU2F	6	35
N6DP0QU2F	6	40
N6DP5RU2F	6	45
N6DP0RU2F	6	50
N6DP5SU2F	6	55
N6DP0SU2F	6	60
N6DP0QA2F	6.1	40
N6DP0PU28F	6.8	30
N6DP5QU28F	6.8	35
N6DP0QU28F	6.8	40
N6DP0PU2G	7	30
N6DP0QU2G	7	40
N6DP0PU2H	8	30
N6DP5QU2H	8	35
N6DP0QU2H	8	40
N6DP5RU2H	8	45

Part Code	D	L (0.00 - + 0.1)
N6DP0RU2H	8	50
N6DP5SU2H	8	55
N6DP0SU2H	8	60
N6DP0QU25H	8.5	40
N6DP0PU2I	9	30
N6DPB0NU2J	10	20
N6DP0PU2J	10	30
N6DP0QU2J	10	40
N6DP0RU2J	10	50
N6DP0SU2J	10	60
N6DP0PU2L	12	30
N6DP0QU2L	12	40

IMPERIAL

Part Code	D	L
N6DP0PU235F	1/4"	30
N6DP5QU235F	1/4"	35
N6DP0QU235F	1/4"	40
N6DP1CG5B	1/2"	30
N6DP1G5B	1/2"	40
N6DP1CH5A	1/8"	30