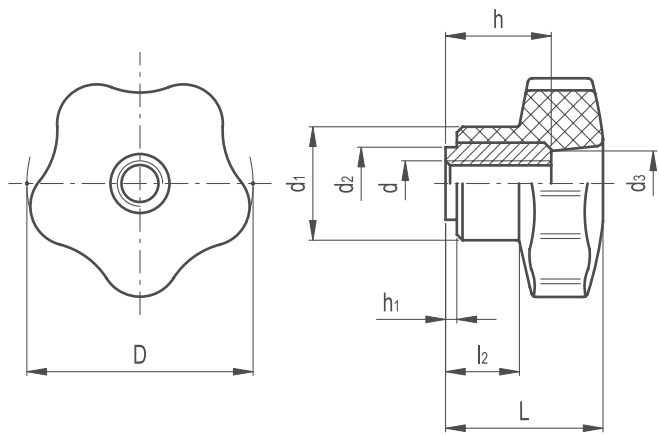


Lobe Knobs Type-B



MATERIAL
/ Phenolic based (PF) Duroplast
/ Resistant to solvents, oils, greases and other chemical agents

COLOUR
/ Black, glossy finish

ASSEMBLY
/ Brass boss, tapped through hole and large metal locking face

FEATURES
The exclusive five-lobe shape offers the operator's fingers a proper grip and prevents unhealthy residues from depositing thanks to its solid shape without cavities.



Part Reference								Mounting Hole	
	D	L	d1	d2	d3	l2	h1	d 6H	h
LBKSB1	40	28	21	14	13	13	1.5	M6	18
LBKSB2	40	28	21	14	13	13	1.5	M8	18
LBKSB3	40	28	21	14	13	13	1.5	M10	18
LBKSB4	50	34	25	16	13	15	1.5	M10	22
LBKSB5	50	34	25	16	13	15	1.5	M12	22
LBKSB6	60	38	27	17	15	18	1.5	M10	26
LBKSB7	60	38	27	17	15	18	1.5	M12	26
LBKSB8	60	38	27	17	15	18	1.5	M14	26
LBKSB9	70	45	30	17	17	21	1.5	M12	26
LBKSB10	70	45	30	17	17	21	1.5	M14	26
LBKSB11	85	56	35	24	18	32	2	M16	35