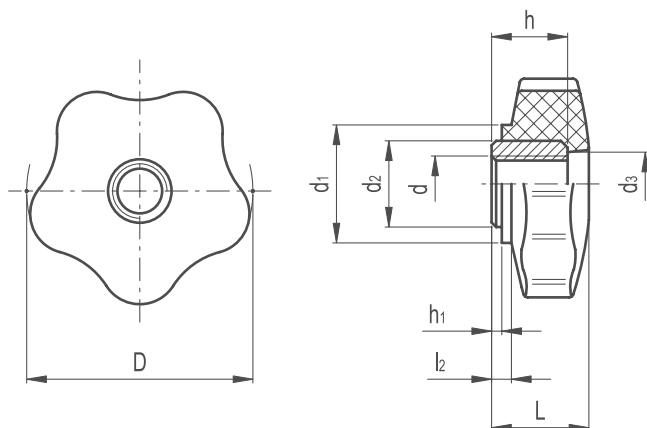


# Lobe Knobs Shortened Series

273

**KNOB & HANDLES**

**MATERIAL**

- / Phenolic based (PF) Duroplast
- / Resistant to solvents, oils, greases and other chemical agents

**COLOUR**

- / Black, glossy finish

**ASSEMBLY**

- / Black-oxide steel boss, tapped through hole

**FEATURES**

The exclusive five-lobe shape offers the operator's fingers a proper grip and prevents unhealthy residues from depositing thanks to its solid shape without cavities.



Part Reference	D	L	d1	d2	d3	l2	h1	d 6H	h
LBKS1	40	19	23	17	14	3	1.5	M8	15
LBKS2	40	19	23	17	14	3	1.5	M10	15
LBKS3	40	19	23	17	14	3	1.5	M12	15
LBKS4	50	21	26	19	14	3	1.5	M12	16
LBKS5	60	24	30	19	16	4	1.5	M12	16
LBKS6	85	30	32	18	18	6	1.5	M14	22