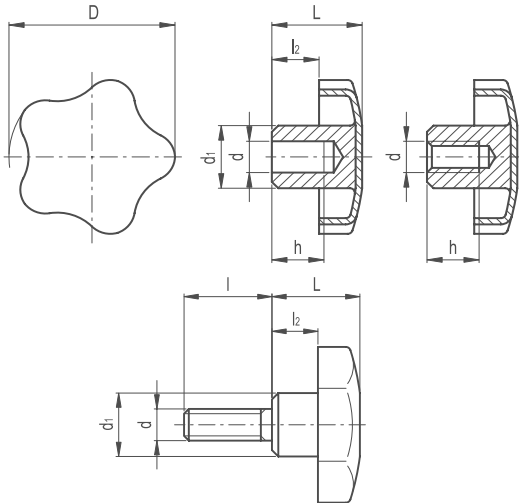


Lobe Knobs Stainless Steel AISI 304

275

KNOB & HANDLES


MATERIAL

/ AISI 304 stainless steel, sandblasted matte finish

ASSEMBLY

/ Execution C: butt-welded hub, H7 reamed blind hole
/ Execution E: butt-welded hub, tapped blind hole
/ Execution with pin: butt-welded hub, AISI 304 stainless steel threaded pin

FEATURES AND APPLICATIONS

AISI 304 stainless steel, thanks to its high resistance to corrosion, allows the application of these knobs on machines and equipment in those sectors where laws or particular hygienic, climatic and environmental factors make it mandatory to use corrosion resistant materials.



Part Reference	D	L	d1	l2	d H7	d	h
LBK1SSC	40	24	14	12	8	-	15
LBK2SSE	40	24	14	12	-	M8	15
LBK3SSC	50	31	18	17.5	10	-	18
LBK4SSE	50	31	18	17.5	-	M10	18
LBK5SSC	60	39	20	21	12	-	22
LBK6SSE	60	39	20	21	-	M12	22

Part Reference	D	L	d1	l2	d	l
LBKP7SS	40	24	14	12	M8	20
LBKP8SS	40	24	14	12	M8	30
LBKP9SS	40	24	14	12	M8	40
LBKP10SS	50	31	18	17.5	M10	20
LBKP11SS	50	31	18	17.5	M10	30
LBKP12SS	50	31	18	17.5	M10	40
LBKP13SS	60	39	20	21	M12	30
LBKP14SS	60	39	20	21	M12	40
LBKP15SS	60	39	20	21	M12	50