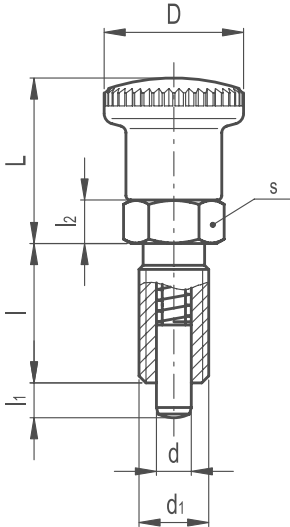


Index Plunger



- / **Threaded body**
Black-oxide steel.
- / **Plunger**
Black-oxide steel with hardened end.
Suggested matching hole in H7 tolerance.
- / **Locking nut**
Black-oxide steel.
- / **“Push / Pull” knurled knob**
High resilience polyamide based (PA) technopolymer, black colour, matte finish. Resistant to solvents, oils, greases and other chemical agents.

ACCESSORIES ON REQUEST
(For sufficient quantities)
Black-oxide steel distance bushings are available for making up for the length of the threading in case the plunger is assembled on thin sheets.

APPLICATIONS
Indexing plungers with locking nut are used where positioning operations are required and in those applications where the plunger needs to be locked in the retracted position.



Part Reference	d	d1	D	L11	L1	l	L2	s
IP1-3270	5	m10 x 1	21	49-0	5	17	5	12
IP2-3270	6	m12 x 1.5	25	59-0	6	20	6	14
IP3-3270	8	m16 x 1.5	31	73.5	7	26	8	19