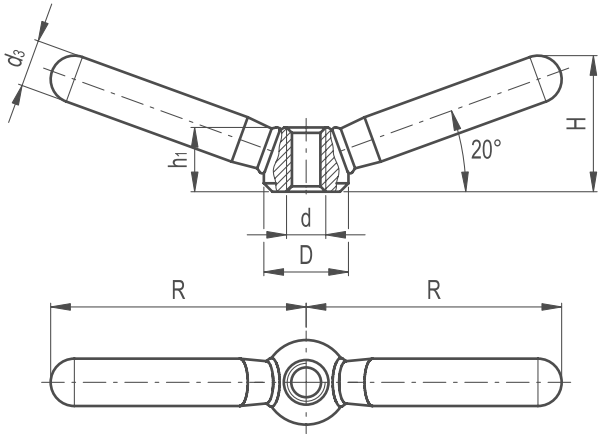


Double Clamping Lever Butt Welded Stainless Steel



MATERIAL

- / AISI 304 stainless steel, sandblasted matte finish
- / The two lever arms are butt-welded to the hub

ASSEMBLY

- / Tapped through hole

FEATURES AND APPLICATIONS

AISI 304 stainless steel, thanks to its high resistance to corrosion allows the application of these clamping nuts on machines and equipment in those sectors where laws or particular hygienic, climatic and environmental factors make it mandatory to use corrosion resistant materials.



| Part Reference | | | | | Mounting Hole | |
|----------------|----|------|----|----|---------------|------|
| | D | R | H | d3 | d | h1 |
| DCLBW1SS | 16 | 47.5 | 26 | 9 | M8 | 12.5 |
| DCLBW2SS | 20 | 59.5 | 32 | 11 | M10 | 15 |
| DCLBW3SS | 25 | 75.5 | 40 | 14 | M12 | 19 |
| DCLBW4SS | 32 | 94.5 | 52 | 18 | M16 | 25 |
| DCLBW5SS | 40 | 118 | 62 | 20 | M20 | 31 |