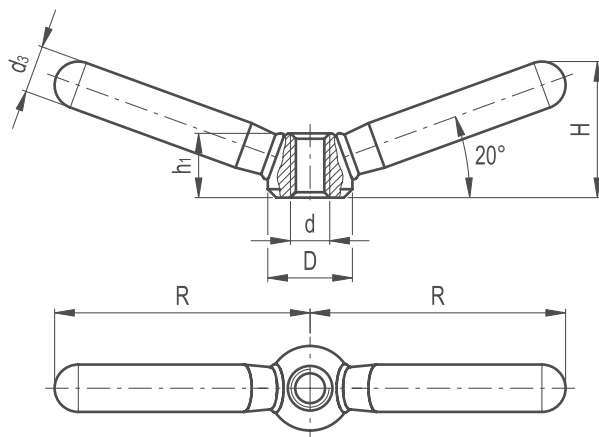


Double Clamping Lever Butt Welded

221

KNOB & HANDLES


MATERIAL

- / Steel, sandblasted matte finish
- / The two lever arms are butt-welded to the hub

ASSEMBLY

- / Tapped through hole



Part Reference	Mounting Hole					
	D	R	H	d3	d	h1
DCLBW1	16	47.5	26	9	M8	12.5
DCLBW2	20	59.5	32	11	M10	15
DCLBW3	25	75.5	40	14	M12	19
DCLBW4	32	94.5	52	18	M16	25
DCLBW5	40	118	62	20	M20	31