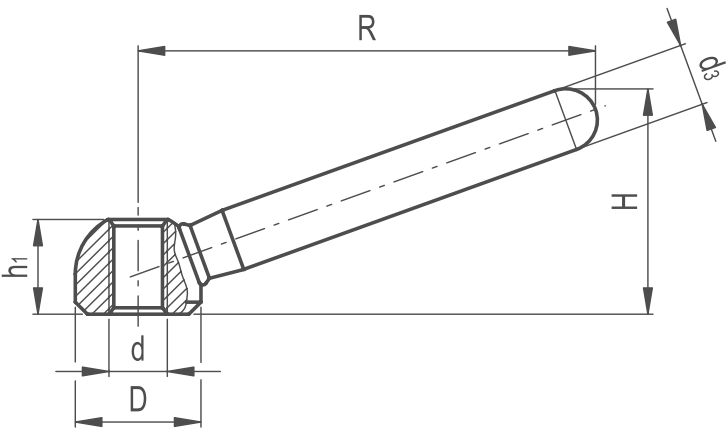


# Clamping Lever Butt Welded Stainless Steel



**MATERIAL**  
/ AISI 304 stainless steel, sandblasted matte finish  
/ The lever arm is butt-welded to the hub

**ASSEMBLY**  
/ Tapped through hole

**FEATURES AND APPLICATIONS**  
AISI 304 stainless steel, thanks to its high resistance to corrosion allows the application of these clamping levers on machines and equipment in those sectors where laws or particular hygienic, climatic and environmental factors make it mandatory to use corrosion resistant materials.



Part Reference					Mounting Hole	
	R	D	H	d3	d	h1
CLBW1SS	60	16	30.5	9	M8	12.5
CLBW2SS	76	20	37	11	M10	15
CLBW3SS	95	25	46	14	M12	19
CLBW4SS	119	32	58.5	18	M16	25
CLBW5SS	152	40	73	20	M20	31