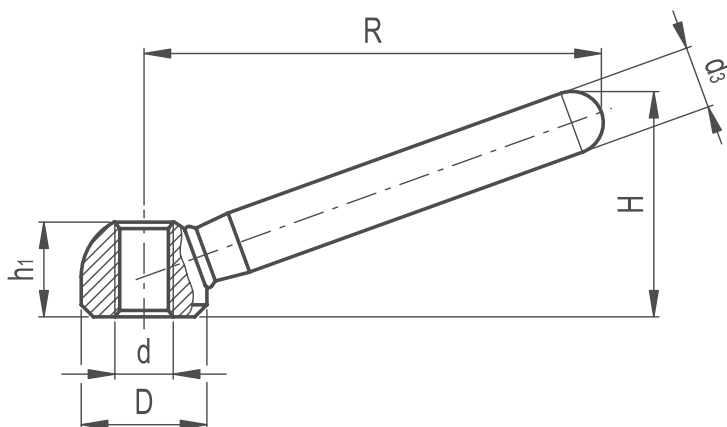


Clamping Lever Butt Welded

219

KNOB & HANDLES

MATERIAL

- / Steel, sandblasted matte finish
- / The lever arm is butt-welded to the hub

ASSEMBLY

- / Tapped through hole



Part Reference	R	D	H	d3	Mounting Hole	
					d	h1
CLBW1	60	16	30.5	9	M8	12.5
CLBW2	76	20	37	11	M10	15
CLBW3	95	25	46	14	M12	19
CLBW4	119	32	58.5	18	M16	25
CLBW5	152	40	73	20	M20	31