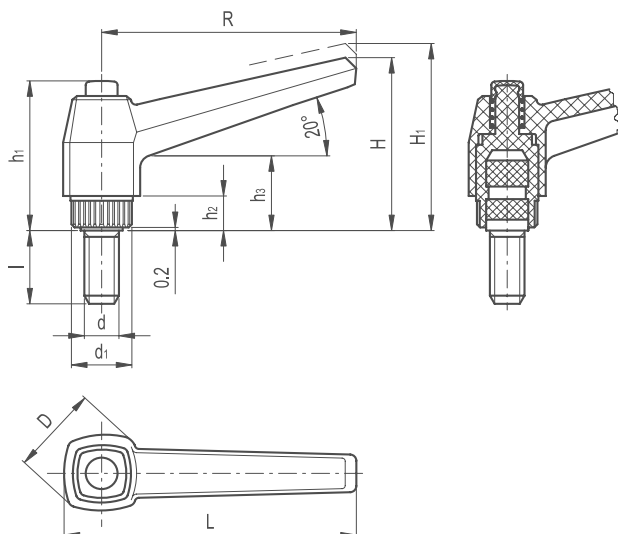


Adjustable Clamping Lever Straight Handle Stainless Steel



231

KNOBS & HANDLES



LEVER BODY

/ Glass-fibre reinforced polyamide based (PA) technopolymer
/ Resistant to solvents, oils, greases and other chemical agents

COLOUR

/ Black, matte finish

PUSH BUTTON

/ Technopolymer, black colour, matte finish

CLAMPING ELEMENT WITH RETAINING PIN

Glass-fibre reinforced technopolymer, black colour, with knurling on the protruding part to make initial tightening easier. AISI 302 stainless steel return spring.

ASSEMBLY

AISI 303 stainless steel threaded stud, chamfered flat end according to UNI 947 : ISO 4753.

SPECIAL EXECUTIONS ON REQUEST

(For sufficient quantities)

/ Lever body RAL 2004 orange, RAL 6011 green, RAL 7031 grey

FEATURES AND APPLICATIONS

Particularly suitable when the lever turning angle is limited owing to lack of space. Compared to other types of adjustable handles with metal retaining screw this solution offers:

/ absolute electric insulation for the operator's hand
/ more comfortable lever release.

AISI 303 stainless steel, thanks to its high resistance to corrosion, allows the application of these adjustable handles on machines and equipment working in those sectors where laws or particular hygienic, climatic and environmental factors make it mandatory to use corrosion resistant materials.

INSTRUCTIONS OF USE

For clamping, lift the lever to disengage the clamping device tooting and bring it back to start position. By releasing the lever, the return spring automatically engages the tooting.



Continued on next page

Adjustable Clamping Lever Straight Handle Stainless Steel

Part Reference	R	L	D	H	H1	h1	h2	h 3	d1	Threaded Stud		Teeth
										d 6g	l	z
ACLSH1SS	42	50	18	32	35.5	29	6	14	12	M6	16	18
ACLSH2SS	42	50	18	32	35.5	29	6	14	12	M6	20	18
ACLSH3SS	42	50	18	32	35.5	29	6	14	12	M6	25	18
ACLSH4SS	42	50	18	32	35.5	29	6	14	12	M6	30	18
ACLSH5SS	63	73	23	43	46.5	37	8	17	15	M8	16	20
ACLSH6SS	63	73	23	43	46.5	37	8	17	15	M8	20	20
ACLSH7SS	63	73	23	43	46.5	37	8	17	15	M8	25	20
ACLSH8SS	63	73	23	43	46.5	37	8	17	15	M8	30	20
ACLSH9SS	63	73	23	43	46.5	37	8	17	15	M8	40	20
ACLSH10SS	63	73	23	43	46.5	37	8	17	15	M8	50	20
ACLSH11SS	80	92	28	54	58.5	47	10	22	19	M10	20	24
ACLSH12SS	80	92	28	54	58.5	47	10	22	19	M10	30	24
ACLSH13SS	80	92	28	54	58.5	47	10	22	19	M10	40	24
ACLSH14SS	80	92	28	54	58.5	47	10	22	19	M12	30	24
ACLSH15SS	80	92	28	54	58.5	47	10	22	19	M12	40	24
ACLSH16SS	80	92	28	54	58.5	47	10	22	19	M12	50	24
ACLSH17SS	100	114	33	65	69.5	54	12	25	25	M12	30	28
ACLSH18SS	100	114	33	65	69.5	54	12	25	25	M12	40	28
ACLSH19SS	100	114	33	65	69.5	54	12	25	25	M12	50	28
ACLSH20SS	100	114	33	65	69.5	54	12	25	25	M12	70	28