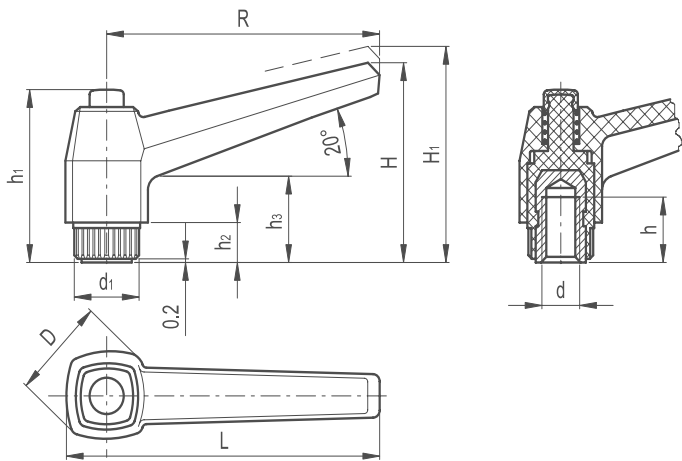


Adjustable Clamping Lever Straight Handle Female



LEVER BODY

/ Glass-fibre reinforced polyamide based (PA) technopolymer
/ Resistant to solvents, oils, greases and other chemical agents

COLOUR

/ Black, matte finish

PUSH BUTTON

/ Technopolymer, black colour, matte finish

CLAMPING ELEMENT WITH RETAINING PIN

Glass-fibre reinforced technopolymer, black colour, with knurling on the protruding part to make initial tightening easier. AISI 302 stainless steel return spring.

ASSEMBLY

Brass boss, tapped blind hole.

SPECIAL EXECUTIONS ON REQUEST

(For sufficient quantities)
/ Lever body in RAL 2004 orange, RAL 6011 green, RAL 7031 grey

FEATURES AND APPLICATIONS

Particularly suitable when the lever turning angle is limited owing to lack of space. Compares to other types of adjustable handles with metal retaining screw this solution offers:

- / absolute electric insulation for the operator's hand
- / no visible steel parts subject to rust
- / more comfortable lever release.

INSTRUCTIONS OF USE

For clamping, lift the lever to disengage the clamping device toothing and bring it back to start position. By releasing the lever, the return spring automatically engages the toothing.



Part Reference	R	L	D	H	H1	h1	h2	h3	d1	Mounting hole d 6h	Teeth No. z
ACLSHF1	42	50	18	32	35.5	29	6	14	12	M5	18
ACLSHF2	42	50	18	32	35.5	29	6	14	12	M5	18
ACLSHF3	63	73	23	43	46.5	37	8	17	15	M6	20
ACLSHF4	63	73	23	43	46.5	37	8	17	15	M8	20
ACLSHF5	80	92	28	54	58.5	47	10	22	19	M8	24
ACLSHF6	80	92	28	54	58.5	47	10	22	19	M10	24
ACLSHF7	80	92	28	54	58.5	47	10	22	19	M12	24
ACLSHF8	100	114	33	65	69.5	54	12	25	25	M10	28
ACLSHF9	100	114	33	65	69.5	54	12	25	25	M12	28
ACLSHF10	100	114	33	65	69.5	54	12	25	25	M14	28
ACLSHF11	100	114	33	65	69.5	54	12	25	25	M10	28