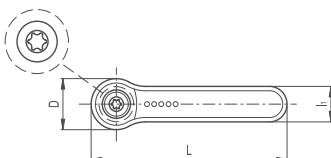
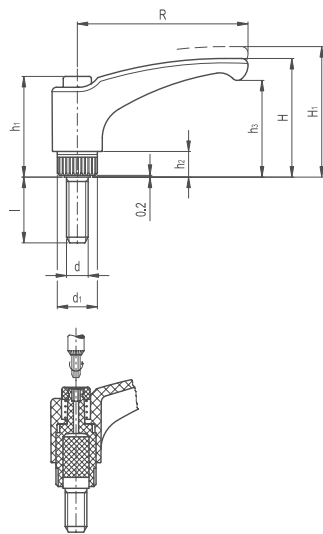


Adjustable Clamping Lever for Quick Assembly

243

KNOBBS & HANDLES


LEVER BODY

/ Glass-fibre reinforced polyamide based (PA) technopolymer
/ Resistant to solvents, oils, greases and other chemical agents

COLOUR

/ Grey-black, matte finish

PUSH BUTTON

/ Technopolymer RAL 2004 orange colour, glossy finish
/ On request and for sufficient quantities it can be supplied in one of the other Ergostyle colours

CLAMPING ELEMENT WITH RETAINING PIN

Glass-fibre reinforced technopolymer, black colour, with knurling on the protruding part to make initial tightening easier. AISI 302 stainless steel return spring.

ASSEMBLY

Zinc-plated steel threaded stud, chamfered flat end according to UNI 947 : ISO 4753.

SPECIAL EXECUTIONS ON REQUEST

(For sufficient quantities)
/ Lever body in orange colour

FEATURES AND APPLICATIONS

Even if it has a plastic push button, adjustable handle offers the possibility of a quick initial screwing during assembly by means of electric or pneumatic screwdrivers with controlled tightening torque system.

INSTRUCTIONS OF USE

For clamping, lift the lever to disengage the clamping device toothing and bring it back to start position. By releasing the lever, the return spring automatically engages the toothing.

ERGONOMY AND DESIGN

The slightly arched shape of the lever and the ergonomic terminal enlargement give the operator a comfortable and safe grip and make the design of the handle more elegant, while the thumb rests naturally on the push button.



Part Reference	R	L	D	H	H1	h1	h2	h3	d1	L1	Mounting Hole d 6h	h	Teeth No. z
ACLQA1	78	90.5	23	54	58	45	12	44	19	16	M10	20	24
ACLQA2	78	90.5	23	54	58	45	12	44	19	16	M10	30	24
ACLQA3	78	90.5	23	54	58	45	12	44	19	16	M10	40	24
ACLQA4	78	90.5	23	54	58	45	12	44	19	16	M10	50	24