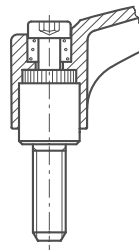
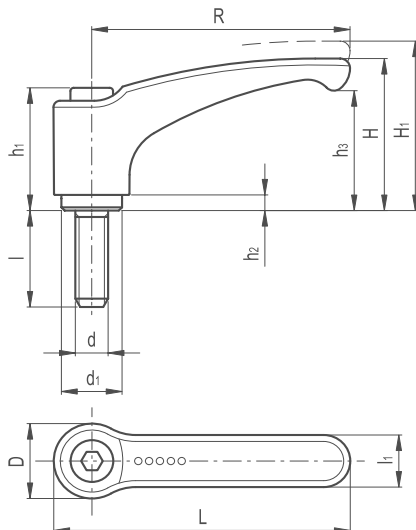


Adjustable Clamping Lever ERM SS

251

KNOBBS & HANDLES


LEVER BODY

/ Zinc alloy die-cast, epoxy resin coating

COLOUR

/ RAL 2004 orange, RAL 3000 red, RAL 9006 grey,
RAL 9005 black matte finish

CLAMPING ELEMENT

AISI 303 stainless steel with toothed element for coupling to the lever body, stainless steel retaining screw and return spring.

SPECIAL EXECUTIONS ON REQUEST

(For sufficient quantities)

- / Lever body in different colours
- / Chrome-plated lever
- / Clamping element with different threadings and lengths

FEATURES AND APPLICATIONS

Particularly suitable when the lever turning angle is limited owing to lack of space. AISI 303 stainless steel, thanks to its high resistance to corrosion, allows the application of these adjustable handles on machines and equipment in those sectors where laws or particular hygienic, climatic and environmental factors make it mandatory to use corrosion resistant materials.

INSTRUCTIONS OF USE

For clamping, lift the lever to disengage the clamping device toothing and bring it back to start position. By releasing the lever, the return spring automatically engages the toothing. If the lever cannot make a 360° rotation, the clamping element can be easily screwed by means of the hexagon socket front head screw (after having disengaged the lever).

ERGONOMY AND DESIGN

The slightly arched shape of the lever and the ergonomic terminal enlargement give the operator a comfortable and safe grip and make the design of the handle more elegant.



Adjustable Clamping Lever ERM SS

252

KNOBBS & HANDLES

RAL 2004 RAL 3000 RAL 9006 RAL 9005



Part Reference	R	L	D	H	H1	h1	h2	h3	d1	L1	Thread		Teeth No. z
											d 6h	l	
ACLP1SS	44	52	14.5	30	33	24.5	3.5	20.5	10	11	M5	12	18
ACLP2SS	44	52	14.5	30	33	24.5	3.5	20.5	10	11	M5	16	18
ACLP3SS	44	52	14.5	30	33	24.5	3.5	20.5	10	11	M5	20	18
ACLP4SS	44	52	14.5	30	33	24.5	3.5	20.5	10	11	M5	25	18
ACLP5SS	44	52	14.5	30	33	24.5	3.5	20.5	10	11	M5	32	18
ACLP6SS	44	52	14.5	30	33	24.5	3.5	20.5	10	11	M5	40	18
ACLP7SS	44	52	14.5	30	33	24.5	3.5	20.5	10	11	M5	50	18
ACLP8SS	44	52	14.5	30	33	24.5	3.5	20.5	10	11	M6	12	18
ACLP9SS	44	52	14.5	30	33	24.5	3.5	20.5	10	11	M6	16	18
ACLP10SS	44	52	14.5	30	33	24.5	3.5	20.5	10	11	M6	20	18
ACLP11SS	44	52	14.5	30	33	24.5	3.5	20.5	10	11	M6	25	18
ACLP12SS	44	52	14.5	30	33	24.5	3.5	20.5	10	11	M6	32	18
ACLP13SS	44	52	14.5	30	33	24.5	3.5	20.5	10	11	M6	40	18
ACLP14SS	44	52	14.5	30	33	24.5	3.5	20.5	10	11	M6	50	18
ACLP15SS	63	73.5	18	38	41	31	3.5	27	13.5	13.5	M6	16	24
ACLP16SS	63	73.5	18	38	41	31	3.5	27	13.5	13.5	M6	20	24
ACLP17SS	63	73.5	18	38	41	31	3.5	27	13.5	13.5	M6	25	24
ACLP18SS	63	73.5	18	38	41	31	3.5	27	13.5	13.5	M6	32	24
ACLP19SS	63	73.5	18	38	41	31	3.5	27	13.5	13.5	M6	40	24
ACLP20SS	63	73.5	18	38	41	31	3.5	27	13.5	13.5	M6	50	24
ACLP21SS	63	73.5	18	38	41	31	3.5	27	13.5	13.5	M6	63	24
ACLP22SS	63	73.5	18	38	41	31	3.5	27	13.5	13.5	M8	16	24
ACLP23SS	63	73.5	18	38	41	31	3.5	27	13.5	13.5	M8	20	24
ACLP24SS	63	73.5	18	38	41	31	3.5	27	13.5	13.5	M8	25	24
ACLP25SS	63	73.5	18	38	41	31	3.5	27	13.5	13.5	M8	32	24
ACLP26SS	63	73.5	18	38	41	31	3.5	27	13.5	13.5	M8	40	24
ACLP27SS	63	73.5	18	38	41	31	3.5	27	13.5	13.5	M8	50	24
ACLP28SS	63	73.5	18	38	41	31	3.5	27	13.5	13.5	M8	63	24
ACLP29SS	78	90.5	21.5	46	50	36	3.5	34.5	16	16	M10	20	26
ACLP30SS	78	90.5	21.5	46	50	36	3.5	34.5	16	16	M10	25	26
ACLP31SS	78	90.5	21.5	46	50	36	3.5	34.5	16	16	M10	32	26
ACLP32SS	78	90.5	21.5	46	50	36	3.5	34.5	16	16	M10	40	26
ACLP33SS	78	90.5	21.5	46	50	36	3.5	34.5	16	16	M10	50	26
ACLP34SS	78	90.5	21.5	46	50	36	3.5	34.5	16	16	M10	63	26
ACLP35SS	78	90.5	21.5	46	50	36	3.5	34.5	16	16	M10	80	26
ACLP36SS	95	109	25	56	61	43	5	42	19	18	M10	20	28
ACLP37SS	95	109	25	56	61	43	5	42	19	18	M10	25	28
ACLP38SS	95	109	25	56	61	43	5	42	19	18	M10	32	28
ACLP39SS	95	109	25	56	61	43	5	42	19	18	M10	40	28
ACLP40SS	95	109	25	56	61	43	5	42	19	18	M10	50	28
ACLP41SS	95	109	25	56	61	43	5	42	19	18	M10	63	28
ACLP42SS	95	109	25	56	61	43	5	42	19	18	M10	80	28
ACLP43SS	95	109	25	56	61	43	5	42	19	18	M12	20	28
ACLP44SS	95	109	25	56	61	43	5	42	19	18	M12	25	28
ACLP45SS	95	109	25	56	61	43	5	42	19	18	M12	32	28
ACLP46SS	95	109	25	56	61	43	5	42	19	18	M12	40	28
ACLP47SS	95	109	25	56	61	43	5	42	19	18	M12	50	28
ACLP48SS	95	109	25	56	61	43	5	42	19	18	M12	63	28
ACLP49SS	95	109	25	56	61	43	5	42	19	18	M12	80	28