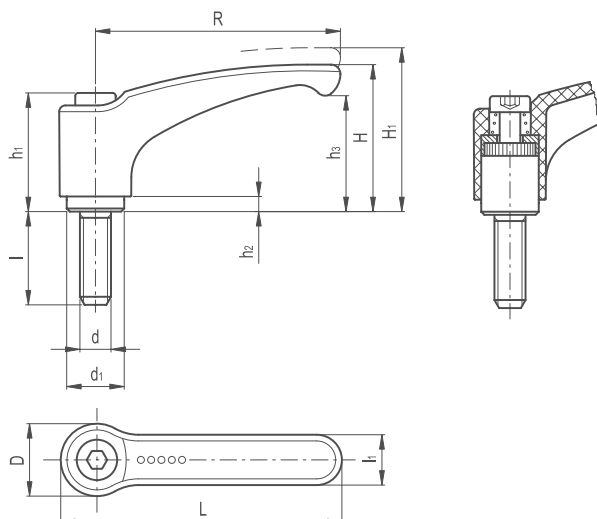


Adjustable Clamping Lever Stainless Steel Glass Fibre Reinforced

BONEHAM

253

KNOB & HANDLES



LEVER BODY

- / Glass-fibre reinforced polyamide based (PA) technopolymer
- / Resistant to solvents, oils, greases and other chemical agents
- / Built-in zinc alloy toothed insert for coupling to the metal clamping element

COLOUR

- / Grey-black, matte finish

CLAMPING ELEMENT

AISI 303 stainless steel with toothed element for coupling to the built-in zinc alloy insert, AISI 303 stainless steel retaining screw and return spring.

SPECIAL EXECUTIONS ON REQUEST

(For sufficient quantities)

- / Lever body in orange colour

FEATURES AND APPLICATIONS

Particularly suitable when the lever turning angle is limited owing to lack of space. The metal toothing of the built-in zinc alloy insert allows the assembly of clamping elements completely made out of metal, which can be easily modified by machining in case of special assembly requirements.

AISI 303 stainless steel, thanks to its high resistance to corrosion, allows the application of these adjustable handles on machines and equipment in those sectors where laws or particular hygienic, climatic and environmental factors make it mandatory to use corrosion resistant materials.

INSTRUCTIONS OF USE

For clamping, lift the lever to disengage the clamping device toothing and bring it back to start position. By releasing the lever, the return spring automatically engages the toothing. If the lever cannot make a 360° rotation, the clamping element can be easily screwed by means of the hexagon socket front head screw (after having disengaged the lever).

ERGONOMY AND DESIGN

The slightly arched shape of the lever and the ergonomic terminal enlargement give the operator a comfortable and safe grip and make the design of the handle more elegant.



Adjustable Clamping Lever Stainless Steel Glass Fibre Reinforced

254

KNOB & HANDLES

Part Reference	R	L	D	H	H1	h1	h2	h3	d1	L1	Thread d 6h	l	Teeth No. z
ACLGFI1SS	44	52	14.5	30	33	24.5	3.5	20.5	10	11	M5	12	18
ACLGFI2SS	44	52	14.5	30	33	24.5	3.5	20.5	10	11	M5	16	18
ACLGFI3SS	44	52	14.5	30	33	24.5	3.5	20.5	10	11	M5	20	18
ACLGFI4SS	44	52	14.5	30	33	24.5	3.5	20.5	10	11	M5	25	18
ACLGFI5SS	44	52	14.5	30	33	24.5	3.5	20.5	10	11	M5	32	18
ACLGFI6SS	44	52	14.5	30	33	24.5	3.5	20.5	10	11	M5	40	18
ACLGFI7SS	44	52	14.5	30	33	24.5	3.5	20.5	10	11	M5	50	18
ACLGFI8SS	44	52	14.5	30	33	24.5	3.5	20.5	10	11	M6	12	18
ACLGFI9SS	44	52	14.5	30	33	24.5	3.5	20.5	10	11	M6	16	18
ACLGFI10SS	44	52	14.5	30	33	24.5	3.5	20.5	10	11	M6	20	18
ACLGFI11SS	44	52	14.5	30	33	24.5	3.5	20.5	10	11	M6	25	18
ACLGFI12SS	44	52	14.5	30	33	24.5	3.5	20.5	10	11	M6	32	18
ACLGFI13SS	44	52	14.5	30	33	24.5	3.5	20.5	10	11	M6	40	18
ACLGFI14SS	44	52	14.5	30	33	24.5	3.5	20.5	10	11	M6	50	18
ACLGFI15SS	63	73.5	18	38	41	31	3.5	27	13.5	13.5	M6	16	24
ACLGFI16SS	63	73.5	18	38	41	31	3.5	27	13.5	13.5	M6	20	24
ACLGFI17SS	63	73.5	18	38	41	31	3.5	27	13.5	13.5	M6	25	24
ACLGFI18SS	63	73.5	18	38	41	31	3.5	27	13.5	13.5	M6	32	24
ACLGFI19SS	63	73.5	18	38	41	31	3.5	27	13.5	13.5	M6	40	24
ACLGFI20SS	63	73.5	18	38	41	31	3.5	27	13.5	13.5	M6	50	24
ACLGFI21SS	63	73.5	18	38	41	31	3.5	27	13.5	13.5	M6	63	24
ACLGFI22SS	63	73.5	18	38	41	31	3.5	27	13.5	13.5	M8	16	24
ACLGFI23SS	63	73.5	18	38	41	31	3.5	27	13.5	13.5	M8	20	24
ACLGFI24SS	63	73.5	18	38	41	31	3.5	27	13.5	13.5	M8	25	24
ACLGFI25SS	63	73.5	18	38	41	31	3.5	27	13.5	13.5	M8	32	24
ACLGFI26SS	63	73.5	18	38	41	31	3.5	27	13.5	13.5	M8	40	24
ACLGFI27SS	63	73.5	18	38	41	31	3.5	27	13.5	13.5	M8	50	24
ACLGFI28SS	63	73.5	18	38	41	31	3.5	27	13.5	13.5	M8	63	24
ACLGFI29SS	78	90.5	21.5	46	50	36	3.5	34.5	16	16	M10	20	26
ACLGFI30SS	78	90.5	21.5	46	50	36	3.5	34.5	16	16	M10	25	26
ACLGFI31SS	78	90.5	21.5	46	50	36	3.5	34.5	16	16	M10	32	26
ACLGFI32SS	78	90.5	21.5	46	50	36	3.5	34.5	16	16	M10	40	26
ACLGFI33SS	78	90.5	21.5	46	50	36	3.5	34.5	16	16	M10	50	26
ACLGFI34SS	78	90.5	21.5	46	50	36	3.5	34.5	16	16	M10	63	26
ACLGFI35SS	78	90.5	21.5	46	50	36	3.5	34.5	16	16	M10	80	26
ACLGFI36SS	95	109	25	56	61	43	5	42	19	18	M10	20	28
ACLGFI37SS	95	109	25	56	61	43	5	42	19	18	M10	25	28
ACLGFI38SS	95	109	25	56	61	43	5	42	19	18	M10	32	28
ACLGFI39SS	95	109	25	56	61	43	5	42	19	18	M10	40	28
ACLGFI40SS	95	109	25	56	61	43	5	42	19	18	M10	50	28
ACLGFI41SS	95	109	25	56	61	43	5	42	19	18	M10	63	28
ACLGFI42SS	95	109	25	56	61	43	5	42	19	18	M10	80	28
ACLGFI43SS	95	109	25	56	61	43	5	42	19	18	M12	20	28
ACLGFI44SS	95	109	25	56	61	43	5	42	19	18	M12	25	28
ACLGFI45SS	95	109	25	56	61	43	5	42	19	18	M12	32	28
ACLGFI46SS	95	109	25	56	61	43	5	42	19	18	M12	40	28
ACLGFI47SS	95	109	25	56	61	43	5	42	19	18	M12	50	28
ACLGFI48SS	95	109	25	56	61	43	5	42	19	18	M12	63	28
ACLGFI49SS	95	109	25	56	61	43	5	42	19	18	M12	80	28