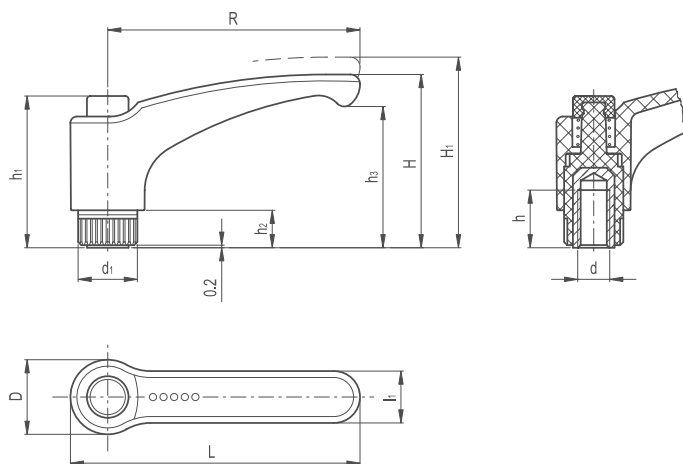


# Adjustable Clamping Lever ERX Stainless Steel Female

**BONEHAM**

239

KNOB & HANDLES



## LEVER BODY

- / Glass-fibre reinforced polyamide based (PA) technopolymer
- / Resistant to solvents, oils, greases and other chemical agents

## COLOUR

- / Grey-black, matte finish

## PUSH BUTTON

- / Technopolymer in Ergostyle colours, glossy finish

## CLAMPING ELEMENT WITH RETAINING PIN

Glass-fibre reinforced technopolymer, black colour, with knurling on the protruding part to make initial tightening easier. AISI 302 stainless steel return spring.

## ASSEMBLY

- AISI 303 stainless steel boss, tapped blind hole.

## SPECIAL EXECUTIONS ON REQUEST

- (For sufficient quantities)
- / Lever body in orange colour.

## FEATURES AND APPLICATIONS

Particularly suitable when the lever turning angle is limited owing to lack of space. Compared to other types of adjustable handles with metal retaining screw this solution offers:

- / absolute electric insulation for the operator's hand
- / more comfortable lever release.

AISI 303 stainless steel, thanks to its high resistance to corrosion, allows the application of these adjustable handles on machines and equipment in those sectors where laws or particular hygienic, climatic and environmental factors make it mandatory to use corrosion resistant materials.

## INSTRUCTIONS OF USE

For clamping, lift the lever to disengage the clamping device toothing and bring it back to start position. By releasing the lever, the return spring automatically engages the toothing.

## ERGONOMY AND DESIGN

The slightly arched shape of the lever and the ergonomic terminal enlargement give the operator a comfortable and safe grip and make the design of this handle more elegant, while the thumb rests naturally on the push button.



RAL 7021 RAL 2004 RAL 7035 RAL 1021 RAL 5024 RAL 3000



Part Reference	R	L	D	H	H1	h1	h2	h3	d1	L1	Mounting Hole		Teeth No.
											d 6h	h	
ACLERXF1SS	44	52	15.5	32.5	36	29.5	6	25	12	11	M5	10	18
ACLERXF2SS	44	52	15.5	32.5	36	29.5	6	25	12	11	M6	10	18
ACLERXF3SS	63	73.5	19	43	47	37.5	8	34.5	15	13.5	M6	16	20
ACLERXF4SS	63	73.5	19	43	47	37.5	8	34.5	15	13.5	M8	13	20
ACLERXF5SS	78	90.5	23	54	58	47	12	44	19	16	M8	20	24
ACLERXF6SS	78	90.5	23	54	58	47	12	44	19	16	M10	18	24
ACLERXF7SS	78	90.5	23	54	58	47	12	44	19	16	M12	17	24
ACLERXF8SS	95	109	26.5	64.5	69	54.5	13	53	21.5	18	M12	20	26
ACLERXF9SSS	95	109	26.5	64.5	69	54.5	13	53	21.5	18	M14	20	26