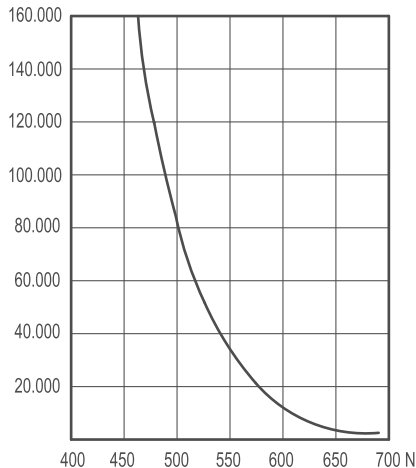


# Adjustable Clamping Lever ERX Female

237

**KNOBBS & HANDLES**

NUMBER OF TIGHTENINGS



## LEVER BODY

/ Glass-fibre reinforced polyamide based (PA) technopolymer  
/ Resistant to solvents, oils, greases and other chemical agents

## COLOUR

/ Grey-black, matte finish

## PUSH BUTTON

/ Technopolymer in Ergostyle colours, glossy finish

## CLAMPING ELEMENT WITH RETAINING PIN

Glass-fibre reinforced technopolymer, black colour, with knurling on the protruding part to make initial tightening easier. AISI 302 stainless steel return spring.

## ASSEMBLY

Brass boss, tapped blind hole.

## SPECIAL EXECUTIONS ON REQUEST

(For sufficient quantities)  
/ Lever body in orange colour

## FEATURES AND APPLICATIONS

Particularly suitable when the lever turning angle is limited owing to lack of space. Compared to other types of adjustable handles with metal retaining screw this solution offers:

- / absolute electric insulation for the operator's hand
- / no visible steel parts subject to rust
- / more comfortable lever release.

## STRESS RESISTANCE

Adjustable handles are generally used for repetitive clamping operations sometimes with very high-frequency. Therefore, the stress resistance (i.e. the resistance to repeated tightening cycles) of the handle unit is particularly important and, especially, the strength of the toothed element which transmits the tightening force from the handle to the threaded element (boss or stud).

In fact, the results of several laboratory tests, performed with a special instrument that simulates the most severe use conditions, have shown that e.g. the adjustable handle can withstand without yielding more than 100,000 tightening cycles, under the action of a force of 490 N (see graphic).

## INSTRUCTIONS OF USE

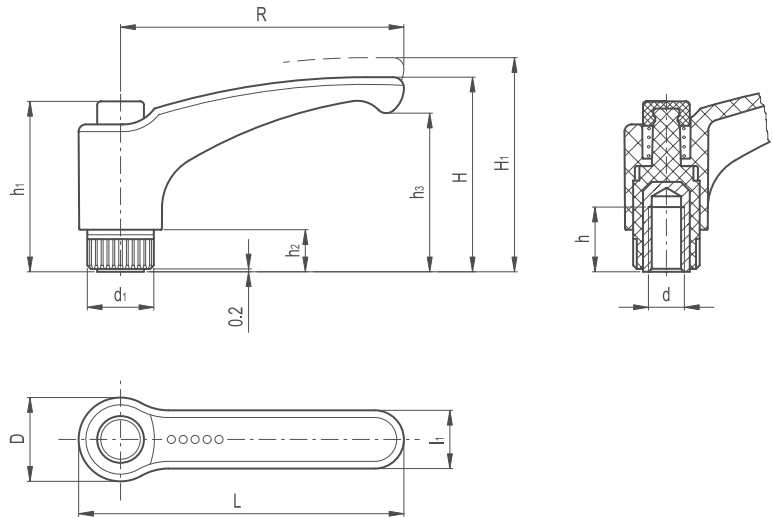
For clamping, lift the lever to disengage the clamping device toothing and bring it back to start position. By releasing the lever, the return spring automatically engages the toothing.

## ERGONOMY AND DESIGN

The slightly arched shape of the lever and the ergonomic terminal enlargement give the operator a comfortable and safe grip and make the design of the handle more elegant, while the thumb rests naturally on the push button.



# Adjustable Clamping Lever ERX Female



RAL 7021 RAL 2004 RAL 7035 RAL 1021 RAL 5024 RAL 3000



Part Reference	R	L	D	H	H1	h1	h2	h3	d1	L1	Mounting Hole		Teeth No.
											d 6h	h	
ACLERXF1	44	52	15.5	32.5	36	29.5	6	25	12	11	M5	10	18
ACLERXF2	44	52	15.5	32.5	36	29.5	6	25	12	11	M6	10	18
ACLERXF3	63	73.5	19	43	47	37.5	8	34.5	15	13.5	M6	16	20
ACLERXF4	63	73.5	19	43	47	37.5	8	34.5	15	13.5	M8	13	20
ACLERXF5	78	90.5	23	54	58	47	12	44	19	16	M8	20	24
ACLERXF6	78	90.5	23	54	58	47	12	44	19	16	M10	18	24
ACLERXF7	78	90.5	23	54	58	47	12	44	19	16	M12	17	24
ACLERXF8	95	109	26.5	64.5	69	54.5	13	53	21.5	18	M12	20	26
ACLERXF9	95	109	26.5	64.5	69	54.5	13	53	21.5	18	M14	20	26