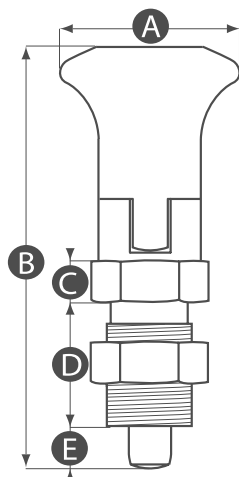


Index Plunger

Spring Loaded with Locking Rest Position



MATERIAL

/ High impact resistant thermoplastic

FINISH

/ Matt

BODY MATERIAL

/ Blackened steel or stainless steel

STANDARD COLOUR

/ Black knob

OPTIONS

Comes as standard with 90° locking rest position in plunger body.



Part No.	A	B	C	D	E	Thread size	Plunger diameter (mm)	Body material
IP5-M10L	21	51	5	17	5	M10x1.0	5	Blackened steel
IP6-M12L	25	61	6	20	6	M12x1.5	6	Blackened steel
IP7-M16L	31	76	8	26	7	M16x1.5	8	Blackened steel
IP5-M10LSS	21	51	5	17	5	M10x1.0	5	Stainless steel
IP6-M12LSS	25	61	6	20	6	M12x1.5	6	Stainless steel
IP7-M16LSS	31	76	8	26	7	M16x1.5	8	Stainless steel